

6289 General Purpose Single Footswitch

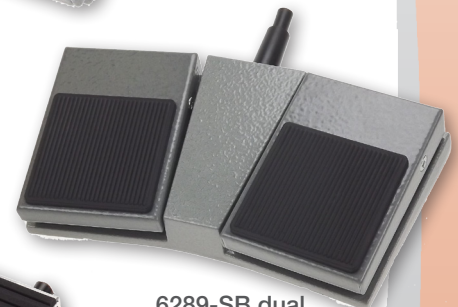
herga

Technology Ltd

- Versatile, compact footswitch
- Durable and reliable with steel housing for long life and reliability (stainless steel versions available)
- Wide choice of colours and switching functions
- Customer colours and logos available on request
- Special designs to customer specifications
- Protection IPX2 or IPX7 (IPX8 on request)
- Medical versions
- Available as multiple pedal versions
- Custom made lengths upon request
- Non-electric versions possible (see air switch information)



Single pedal

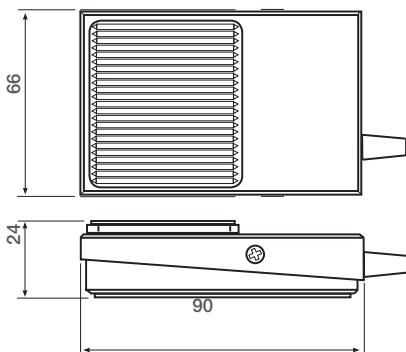


6289-SB dual pedal version



6289-01 custom length versions available

Reference dimensions



6289 - Single pedal - range options and specifications

		Stock models							
Model part no.		6289-WO	6289-CC	6289-PP	6289-DO	6289-SC	6289-DA	6289-CT	6289-WS
Depth	mm								90
Width	mm								66
Height	mm								24
Weight	Kg								0.38
Material	Body	16 SWG mild steel, powder coat grey hammertone							Stainless steel
	Tread	Polypropylene, black							
	Guard	18 SWG mild steel, powder coat grey hammertone							
No. of poles & action		SPST N/O	SPCO	SPST Latching	DPST N/O	SPST N/O	DPST staggered	SPCO	SPST N/O
Cable		2 core + earth	3 core + earth	2 core + earth	4 core + earth	2 core + earth	4 core + earth	Terminal block	2 core + earth
Cable length as standard	m	2	2	2	2	2	2	n/a	2
Cable O/D	mm	6.8 (nom)	6.8 (nom)	6.8 (nom)	6.8 (nom)	6.8 (nom)	6.8 (nom)	n/a	6.8 (nom)
Current rating at 250V AC (½ HP)	A	6(1.5)	3(3)	6(3)	3(3)	6(3)	3(3)	5(3)	3(3)
IP rating of internal switch module		IPX7	IPX2	IPX2	IPX2	IPX2	IPX2	IPX2	IPX7
Standards		Footswitch: low voltage directive 2014/35/EU, EN 60950; Microswitch: EN 61058-2-1, EN 61058							
Operating temperature	°C	-5 to +40							

Various connection cables are available (up to protection IPX8).
Low volume surcharge for non-standard models



Subject to change without notice

6289 General Purpose Single Footswitch **herga**

Technology Ltd

General specifications

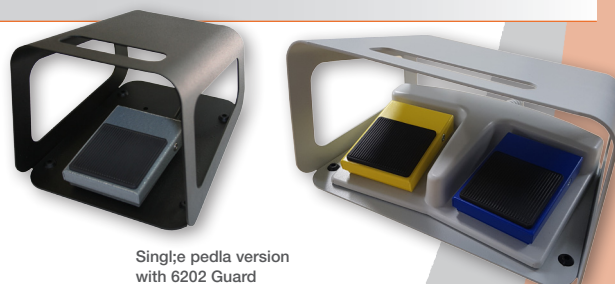
Standards/approvals	Footswitch: low voltage directive 2014/35/EU, EN 60950 Microswitch: EN 61058-2-1, EN 61058	Operating temperature range	-5°C to +40°C
Degree of protection	EN 60529 IPX2 or IPX7 (IPX8 upon request)	Body material	See table below
Connection method	Stripped cable cores or connector of your choice	Weight	See table below
Electrical rating	See table	Additional information	Cordset variations of each standard option are available
Contact configuration	See table		

6289-SB & -01 - Dual pedal versions - range options and specifications

				Stock models			
Model part no.		6289-SB	6289-01	Model part no.		6289-SB	6289-01
Depth	mm	100	95	No. of poles & action		Single and double pole versions available	2 x N/O single pole footswitches (Change over & double pole versions available)
Width	mm	180	760 (200 to 3000 possible)	Cable		Dependent on application	3 core as std. (other types available upon request or dependent on application)
Height	mm	32	25	Cable length as standard	m	2	2
Weight	Kg	0.79	1.2	Current rating	A	0.1A 24V AC/DC – 3A 250V AC	6(3)A 1/2 HP
Material	Body	2 mild steel switches on die cast aluminium base	2 mild steel switches under aluminium extrusion	IP rating of internal switch module		IPX2 (IPX7 on request)	IPX2 (IPX7 on request)
	Tread	Std black polypropylene (other colours available upon request)	Black rubber tread				
	Guard	18 SWG mild steel, painted	-				
Colour option		Grey Hammertone (other colours available)	n/a				

Accessories

Part Number	Description
6202-0001	Single Black RAL 9005 guard
6202-0002	Single Grey RAL 7035 guard
6202-0003	Twin Grey RAL 7035 guard



Single pedal version with 6202 Guard

Dual pedal version with 6202 Guard