



- ▶ **Programmable angles from 30° up to 360°**
- ▶ **Long life - extremely robust**
- ▶ **Puck and Magnet design**
- ▶ **IP68 protection**
- ▶ **Hall Effect non-contacting technology**
- ▶ **Redundant output**

Based on the well proven Euro-XPk angle sensor, this miniaturised variant boasts the same features in a 30 mm outer diameter package. With programmable angle selection and redundant output, this extremely compact and fully contactless Hall Effect Sensor features IP68 sealing and will suit arduous, high-duty cycle position feedback applications in all industries.

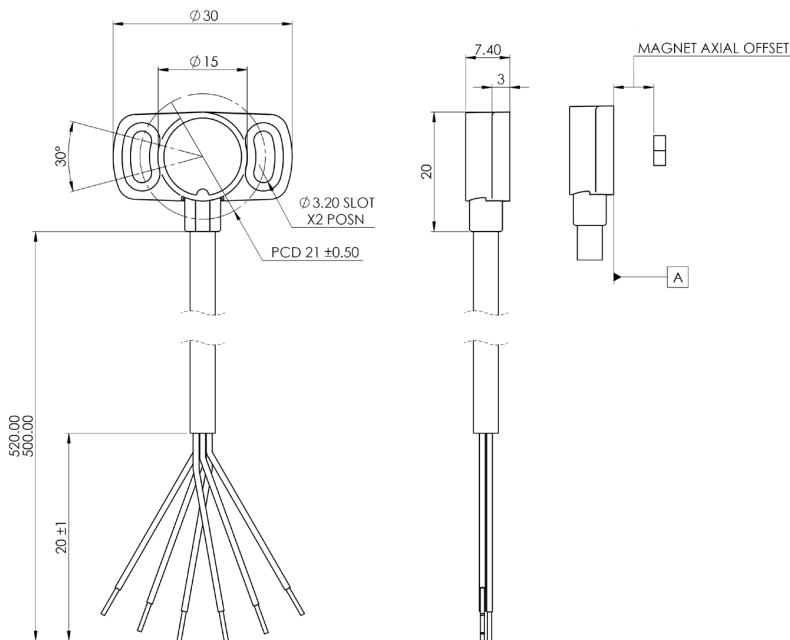
Specifications

Mechanical	
Typical Life Cycle	In excess of 100 million cycles
Measuring range	360° redundant, signal 1 cw, signal 2 ccw
Housing	High grade temperature resistant plastic
Tightening torque	Maximum recommended tightening Torque 2Nm
Mounting	Customer to ensure correct suitability and fitment of mounting bolts
Weight	17 g
Environmental	
Operating temperature	-40° C to +125° C (Short term 150° C)
Vibration	20...2000 Hz; Amax = 0.75 mm; amax = 31.4 g to IEC 60068-2-6
IP rating	IP68
Electrical	
Supply Voltage	5V +/- 0.5V
Output signal	Ratiometric 5%...95% of supply (+/-25mv of specified electrical output range for both start and end voltage). PWM Frequency 100 Hz ... 1000 Hz default, duty cycle between 5% - 95%
Independent linearity	+/- 0.5% of each signal range
Sample Rate (Fast Mode)	5KHz
System Propagation Delay (Fast Mode)	600µs
Isolation resistance	200 MΩ (500 VDC, 1 bar, 2s)
Electrical connection	See ordering code/wiring diagram
Cable type	24 AWG PFA Insulated cable sheathed in a PUR Fuel/Diesel resistant jacket

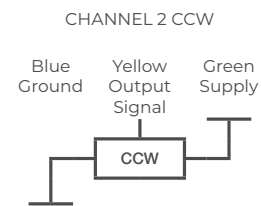
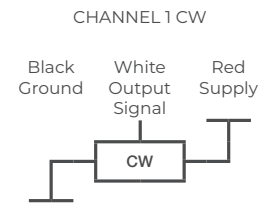
EURO-MXPK PROGRAMMABLE SENSOR MICRO PUCK SENSOR



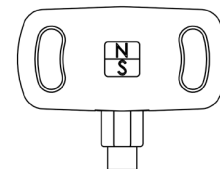
Dimensions in mm



Wiring and orientation

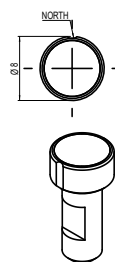


ORIENTATION -
midpoint of electrical travel shown

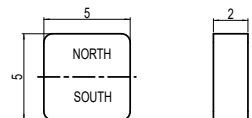
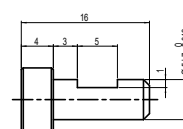


Magnet options - dimensions in mm

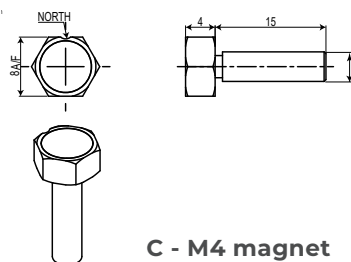
Magnet Code	Magnet Type	Distance from MXPK face
A	No magnet	
B	5x5x2 magnet	0.25 - 2 mm
C	M4 magnet	0.25 - 1 mm
D	Micro plug magnet	0.25 - 1 mm
E	M2 Female magnet	0.25 - 1.5 mm
X	Custom - on request	-



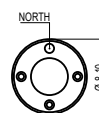
D - Micro Plug magnet



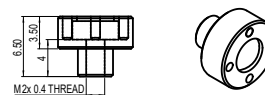
B - 5 x 5 x 2 magnet



C - M4 magnet



E - M2 Female magnet



Note for magnets: Maximum permitted radial offset = +/- 0.3 mm

EURO-MXPK PROGRAMMABLE SENSOR MICRO PUCK SENSOR



Ordering information

(Please use the characters in the chart below to create your product code)

Sample Code	Euro-MXPK	-	X	-	1	1	1	-	1521	-	360	-	11	-	78	-	50
Series	Euro-MXPK																
Accompanying magnet	A No magnet																
	B 5x5x2 magnet																
	C M4 magnet																
	D Micro Plug magnet																
	E M2 female magnet																
	X Custom - on request																
Input type	1 5V supply																
Output type	1 Analog Ratiometric																
	2 PWM																
No. of channels	1 Single channel																
	2 Dual channel																
Electrical angle	360 Standard electrical angle 360°																
	Optional Angle from 30° to 360° in 1° steps (e.g. 181 = 181°)																
Output signal	1 5% to 95% of input Voltage																
	2 10% to 90% of input Voltage																
	3 Custom on request e.g. 11 = 5 to 95% both channels																
Channel direction	7 Clockwise																
	8 Counter clockwise																
	e.g. 77 = Clockwise both channels																
Cable length	50 Standard Cable Length 500 mm																
	XX Custom on request < 1 metre																
	XXX Custom on request > 1 metre																

Disclaimer: Specifications listed are only applicable when used in conjunction with Variohm specified magnets.

EURO-MXPK PROGRAMMABLE SENSOR MICRO PUCK SENSOR



The following sensor models are available as standard products:

95531 Euro-MXPK-A-111-1521-360-1-7-50
95532 Euro-MXPK-A-111-1521-120-1-7-50
95533 Euro-MXPK-A-111-1521-060-1-7-50
95534 Euro-MXPK-A-112-1521-360-11-78-50
95535 Euro-MXPK-A-112-1521-120-11-78-50
95536 Euro-MXPK-A-112-1521-060-11-78-50

The following magnet models are available as standard products:

17962 B-5x5x2 Magnet
94385 C-M4 Magnet
94386 D-Micro Plug Magnet
94387 E - M2 Female Magnet