

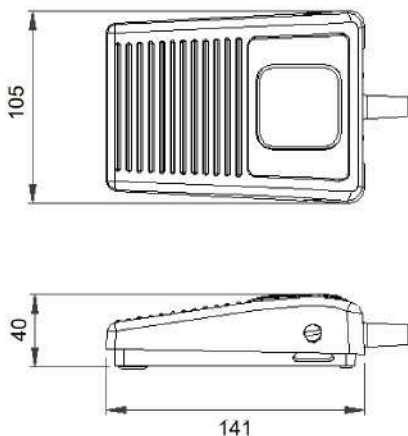


- ▶ Works with the following OS: All Windows™, MAC™ and Linux™
- ▶ Third party tested USB 2.0 compliant
- ▶ Cable length 2.5M, other lengths on request

The Herga USB footswitch is programmed by the user to simulate up to four simultaneous keystrokes. No software installation is required as it will be recognised by the operating system once plugged into an USB socket. Programming is done simply by setting small switches inside the footswitch after having removed the cover.

Specifications	
Standards/approvals	USB HID Compliant (no software drivers required)
Power	5V @ 25 mA
Temperature range	10 ... 60° C
Material	Moulded Glass filled nylon plastic construction
Rating	Sealed to IPX2
Weight	395 g

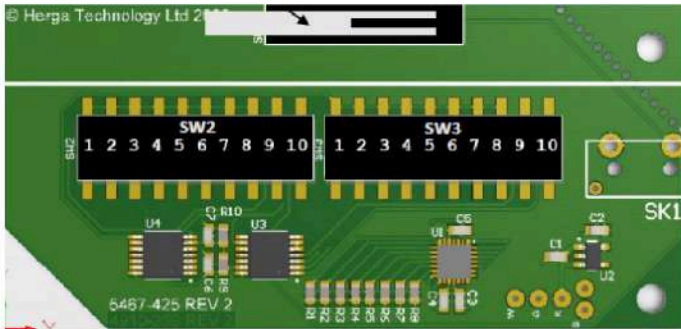
Dimensions





Internal Switch Layout

Before replacing the footswitch lid, test the required keystroke function. This is done by plugging the footswitch into an USB port on the PC then pressing the lever on the microswitch SW1.



Setting the footswitch function

- ▶ Release the two hinge screws with a screwdriver turning them a quarter turn and removing them.
- ▶ The lid will then come away revealing the switches.
- ▶ Find the Key (or combination of keys) you require on the tables below and set Switch 2 or Switch accordingly.

Key	SW2	SW3
A	3	2
B	6	1
C	5	3
D	3	4
E	1	4
F	3	5
G	4	5
H	4	6
I	1	7
J	3	6
K	3	7
L	3	8
M	5	6
N	6	2
O	1	8
P	2	3
Q	1	2
R	1	5
S	3	3
T	2	5
U	1	6
V	5	4
W	1	3
X	5	2
Y	2	6
Z	5	1

Key	SW2	SW3
CTRL	10	
ALT		10
SHIFT		9

Key	SW2	SW3
1 (!)	8	2
2 (")	8	3
3 (#)	8	4
4 (\$)	8	5
5 (%)	7	5
6 (^)	7	6
7 (&)	8	6
8 (*)	8	7
9 (())	7	1
0 ())	6	8

Key	SW2	SW3
ESC	4	2
°^	4	1
TAB	2	2
Caps Lock	9,4	7
Win	4	4
Space	9,4	1
/?	9,6	2
[{	9,2	4
]}	2	7
::	9,3	4
~ #	9,1	3
.>	5	8
,<	5	7
_ -	9,3	8
= +	9,4	6
\	7	2
Back space	9,2	2

Key	SW2	SW3
F1	7	3
F2	7	4
F3	2	4
F4	4	8
F5	8	1
F6	4	7
F7	2	8
F8	7	8
F9	9,7	2
F10	9,8	2
F11	9,4	2
F12	9,6	1
F13	9,6	3
F14	9,6	4
F15	9,6	5
F16	9,7	3
F17	9,7	4
F18	9,7	5
F19	9,8	3
F20	9,8	4

Key	SW2	SW3
Print Scrn	9,8	1
Scroll	9,1	4
Pause	9,4	5
Insert	9,2	8
Home	9,1	8
Page Up	9,3	6
Delete	9,7	1
End	9,2	7
Page Down	9,3	7

Key	SW2	SW3
Num Lock	9,5	1
Num 1	9,3	1
Num 2	9,2	3
Num 3	9,3	5
Num 4	9,2	1
Num 5	9,1	5
Num 6	9,2	6
Num 7	9,1	6
Num 8	9,1	6
Num 9	9,3	3
Num 0	9,3	2
Num .	9,2	5
Num +	9,1	7
Num -	9,5	8
Num *	9,5	7
Num /	9,5	6
Num Enter	9,5	3

Key	SW2	SW3
↑	6	5
↓	6	7
→	6	4
←	6	3

Mouse	SW2	SW3
Left click	2	1
Right click	3	1
Middle click	4	3