

- ▶ **Attractive raised dome style button**
- ▶ **Double break momentary action**
- ▶ **Withstands extreme shock & vibration**
- ▶ **Positive tactile feedback**
- ▶ **IP64 to IP69K**
- ▶ **RoHS compliant**

This rugged pushbutton switch comes with a raised dome button profile. It also offers excellent mechanical and electrical performance while operating under severe conditions found in demanding applications.

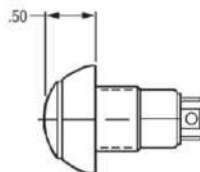
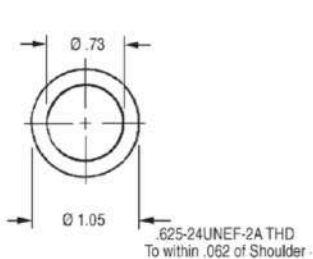
The button is available in standard and low operating force double break snap-action models. All are momentary action. Special contact variations are available. High contact pressure and unique contact design provide for logic level switching capability as well as full rated service.

The tactile button is a quality precision snap-action switch designed for use in panels, control sticks, computers, instruments, heavy equipment and other demanding applications where attractive, rugged pushbutton switches are required.



Specification		
Electrical Ratings		
Load	Sea Level @ 28VDC or 115VAC, 60/400 Hz	Cycles
Resistive	10 A	100,000
Resistive	15 A	25,000
Inductive	5 A	100,000
Lamp	3 A	100,000
Center Contact	3 A max	100,00
Materials		
Case	Anodized aluminum alloy	
Button	Thermoplastic	
Terminals	Brass with silver plate, gold plate for logic level	
Terminal Hardware	Screws, lockwasher and terminal lugs	
Mounting Hardware	Hex nut, lockwasher and panel seal when applicable	
Mechanical		
Mechanical Life	1,000,000 cycles, circuit forms 1,2 & 6 100,000 cycles, circuit forms 3,4 & 5	
Seal	IP64 or IP68S and IP69K	
Operating Temp Range	-55° C to +85° C	
Operating Force	2.0 lbs. to 4.0 lbs., +0,5/-1.0 lb.	
Total travel	0.075 +/- 0.015 inches	
Overtravel	0.012 inches min	
Movement Differential	0.015 inches min	

Dimensions



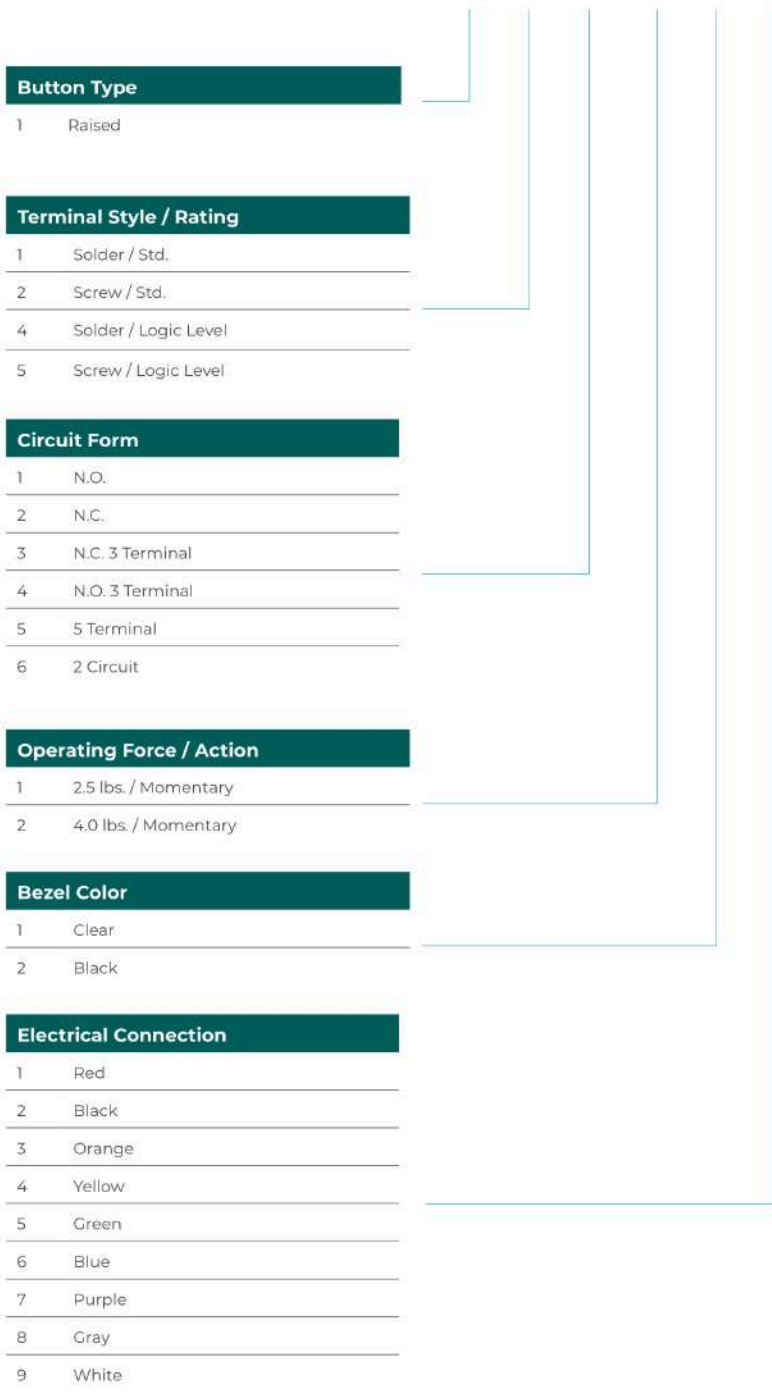
Raised



Ordering information

(Please use the characters in the chart below to create your product code)

Sample Code 6245 - 1 1 1 1 1 1



If you require a customized solution for your program contact our sales team.